

SCALE OF RE PARTICIPATORY CITI

REFERENCE FOR ZENSHIP SCHOOLS

by Lea Škerlic
Art History Teacher at
Gimnazija Gian Rinaldo Carli Capodistria
Slovenia

What is it?

A practical self-assessment tool

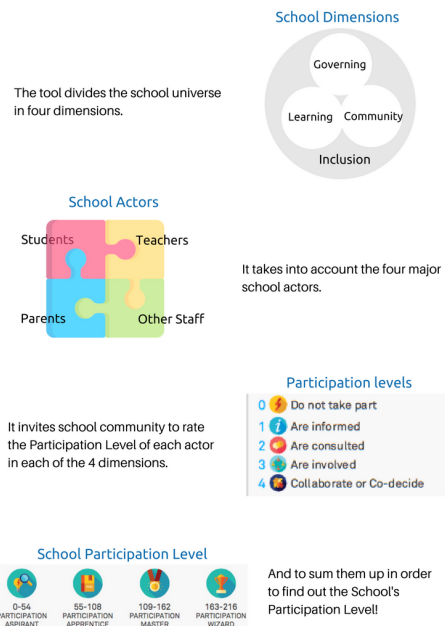
→ understand how participative your school is

A process that invites schools to become more participatory

→ think and find ways to make all school actors' voices count



What does it evaluate?



The process provides insights into the Participation of different school actors in different dimensions that articulate school life, its democratic processes and open-mindedness.

How it started?

Through the Erasmus + project *Network of Democratic Citizenship Schools*, three Schools and three Civil Society Organizations, from Portugal, Poland and Slovenia developed it, taking into account different European realities.

What will the Participation level tell you?



The different levels will tell you **where you are** in terms of Participation.

Through the evaluation your working group will **identify methods, actions and school organs that work and promote participation, and other that need improvement or should be established.**

The working group itself will be promoting participation, since it will give different actors the possibility to express their opinion and propose new ideas in all four dimensions.

Why is this important?

PARTICIPATION is...

... a Human Right

→ it promotes democratic governance, rule of law, social inclusion, economic development and empowers people. This crucial right is not always practiced and, as researches show, young people has been struggling to find ways to make their voices heard

... a Pedagogical Process

→ the best way to learn how to participate is by participating, developing skills and competences, values and attitudes to a more active and responsible citizenship (learning by doing)

It is essential to create spaces where Young People can contribute to the development of their communities while practicing Participation.



Schools should play a significant role in providing knowledge and experiences of citizenship, by allowing and encouraging the Participation of the various school actors in building *glocal* solutions covering, not only the school environment and the surrounding community (local citizenship), but also enabling the development of a sense of belonging in the European and global communities (European and global citizenship).

When shall you start? NOW!

How do you use it?

